



# Wallace State Community College

Hanceville Alabama

## Fall Semester Demographics

2004-2005

### Gender

Male	1,912	37%
Female	3,321	63%
<b>TOTAL</b>	<b>5,233</b>	<b>100%</b>

Full-Time	3,038	58%
Part-Time	2,195	42%
<b>TOTAL</b>	<b>5,233</b>	<b>100%</b>

### Hours Enrolled

12 or more	3,028	58%
6 to 11	1,268	24%
5 or less	937	18%
<b>TOTAL</b>	<b>5,233</b>	<b>100%</b>

### Enrollment by County

<u>Age</u>					
17 & Under	251	5%	Cullman	2,302	44%
18-19	1,515	29%	Blount	709	14%
20-21	885	17%	Morgan	508	10%
22-24	584	11%	Jefferson	599	11%
25-29	558	11%	Marshall	350	7%
30-34	413	8%	Winston	137	3%
35-39	276	5%	Madison	98	2%
40-49	371	7%	Walker	90	2%
50-64	209	4%	Lawrence	58	1%
65 & Over	171	3%	Lauderdale	39	1%
<b>TOTAL</b>	<b>5,233</b>	<b>100%</b>	Limestone	37	1%
			Other AL counties	228	4%
			<b>TOTAL</b>	<b>5,155</b>	<b>99%</b>

### Internet Classes

<u>Course</u>	<u># Enrolled</u>	
BUS	30	7%
OAD	25	6%
CIS	87	21%
FSC	16	4%
HIT	54	13%
HED	37	9%
HUM	98	24%
MAT	36	9%
PTA	29	7%
<b>TOTAL</b>	<b>412</b>	<b>100%</b>

### Full Time by Age

<u>Age</u>	<u>Male</u>		<u>Female</u>	
17 & Under	12	0.2%	17	0.3%
18-19	554	10.6%	732	14.0%
20-21	227	4.3%	341	6.5%
22-24	111	2.1%	184	3.5%
25-29	78	1.5%	201	3.8%
30-34	51	1.0%	165	3.2%
35-39	31	0.6%	94	1.8%
40-49	44	0.8%	123	2.4%
50-64	22	0.4%	45	0.9%
65 & Over	3	0.1%	3	0.1%
<b>TOTAL</b>	<b>1,133</b>	<b>22%</b>	<b>1,905</b>	<b>36%</b>

### Part Time by Age

<u>Age</u>	<u>Male</u>		<u>Female</u>	
17 & Under	88	1.7%	134	1.9%
18-19	93	1.8%	136	2.6%
20-21	114	2.2%	203	3.9%
22-24	97	1.9%	192	3.7%
25-29	80	1.5%	199	3.8%
30-34	66	1.3%	131	2.5%
35-39	47	0.9%	104	2.0%
40-49	59	1.1%	145	2.8%
50-64	54	1.0%	88	1.7%
65 & Over	81	1.5%	84	1.6%
<b>TOTAL</b>	<b>779</b>	<b>15%</b>	<b>1,416</b>	<b>26%</b>

### Ethnicity

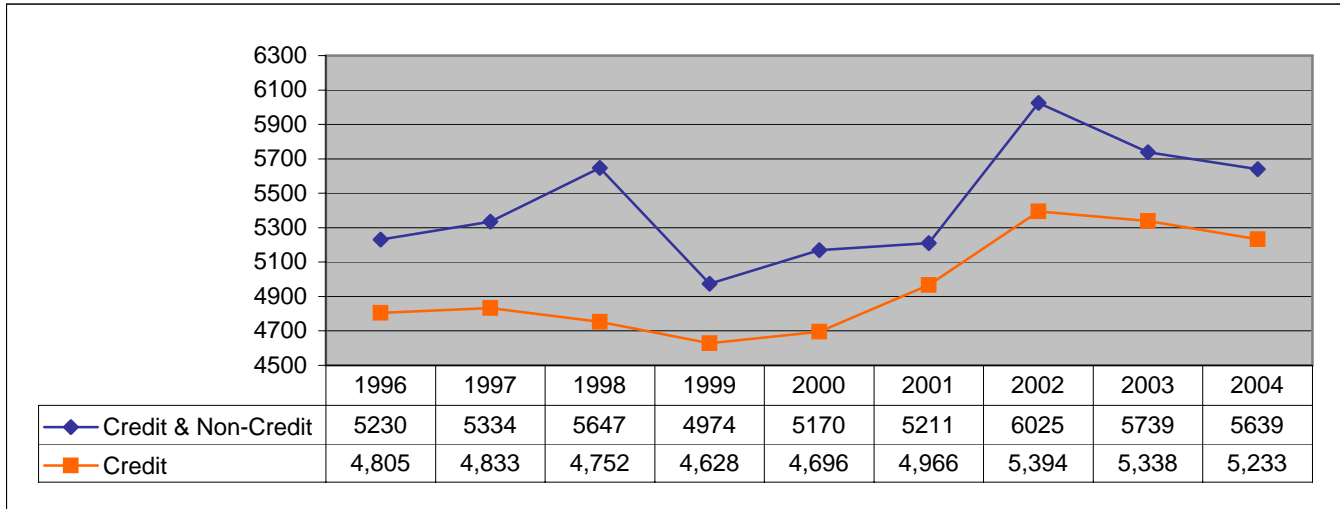
Caucasian	4,818	92.1%
Black	241	4.6%
Native Amer	37	0.7%
Hispanic	45	0.9%
Asian	21	0.4%
Other	71	1.4%
<b>Total</b>	<b>5,233</b>	<b>100%</b>

### Developmental Classes

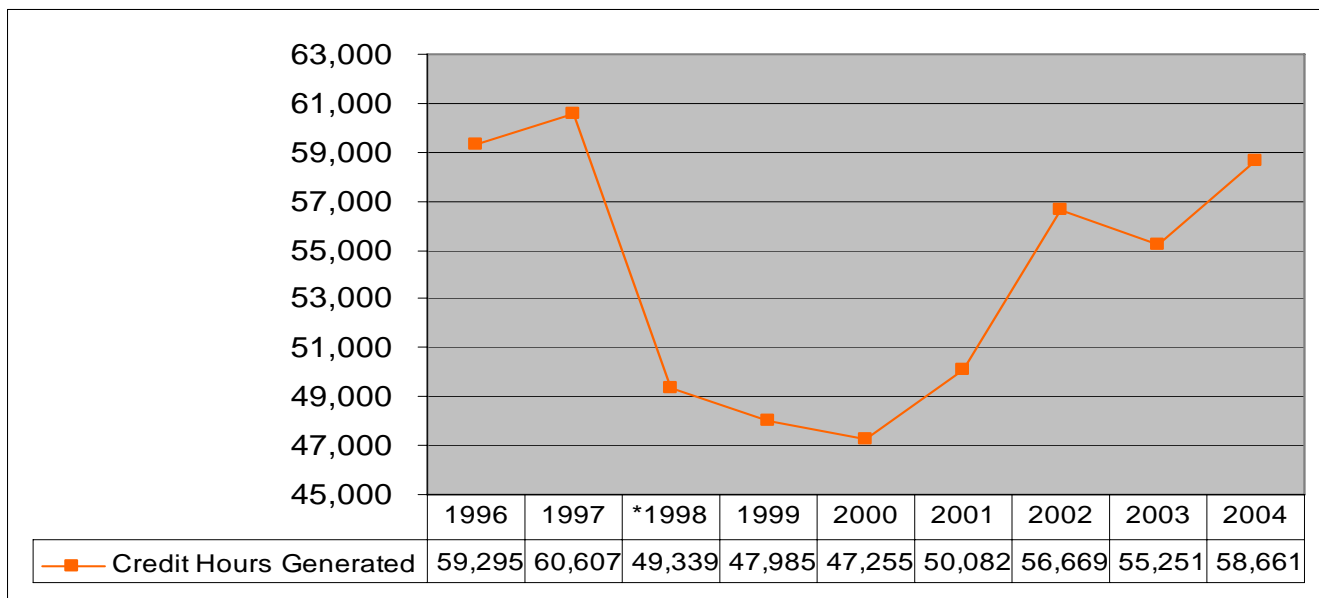
<u>ENG 092</u>	<u>ENG 093</u>	<u>MTH 090</u>	<u>RDG 083</u>	<u>TOTAL</u>
40	150	155	77	422
9%	36%	37%	18%	100%



### Fall Headcount



### Credit Hours Generated



\*Converted from Quarter to Semester Hours