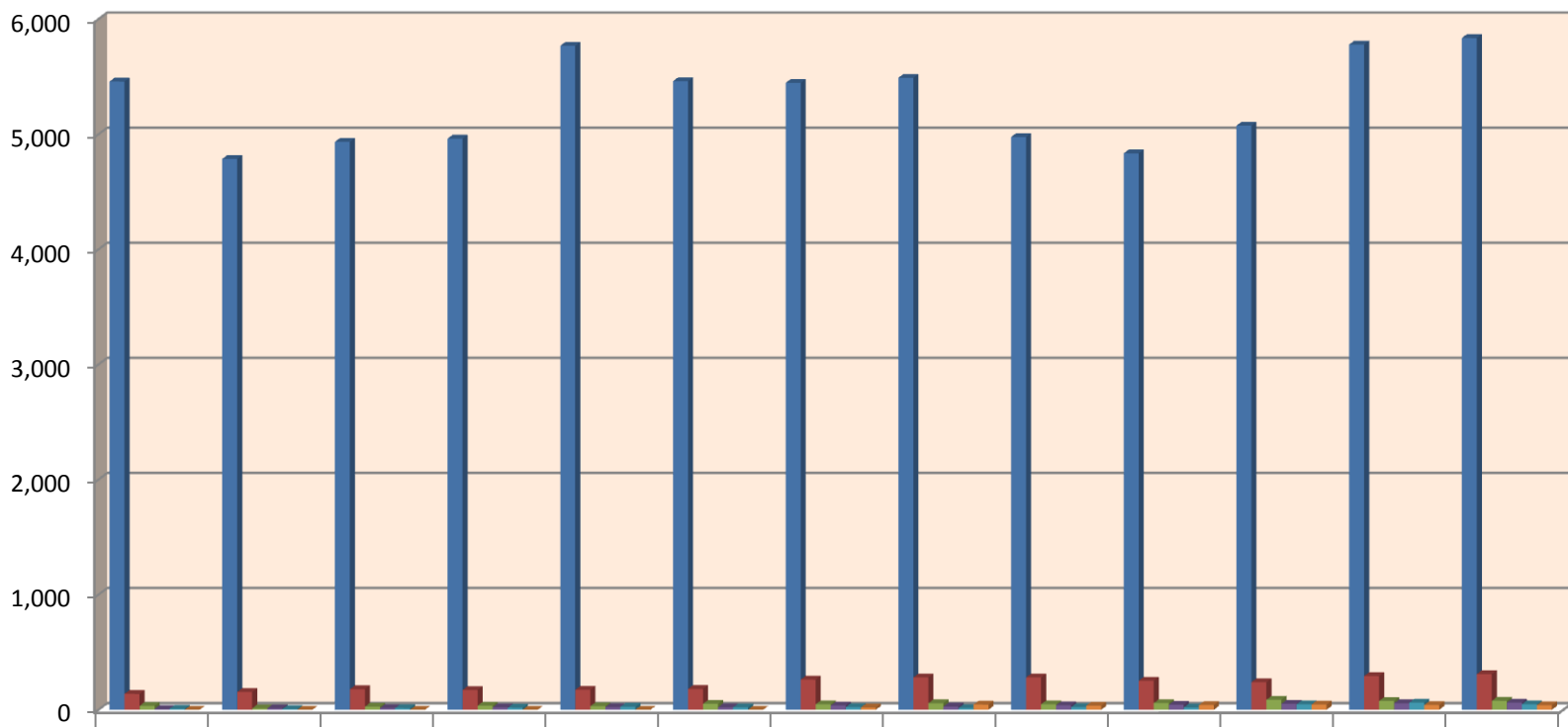


History of Enrollment by Ethnicity Fall Semester



	1998	1999	2000	2001	2002	2003	2004	2005	2006	2007	2008	2009	2010
■ White	5,459	4,786	4,935	4,963	5,770	5,462	5,447	5,491	4,977	4,835	5,075	5,780	5,837
■ Black	138	155	179	172	174	181	262	281	281	253	240	293	310
■ Hispanic	34	13	27	36	31	52	48	57	48	58	87	77	78
■ Native American	7	13	15	21	23	22	37	28	39	44	52	57	63
■ Asian	9	6	14	18	26	21	23	15	23	20	48	62	48
■ Other	0	1	0	1	1	1	20	45	35	41	46	41	40

Source: Fall Term PERS Reports & DAX Reports